

Tuition and Affordability

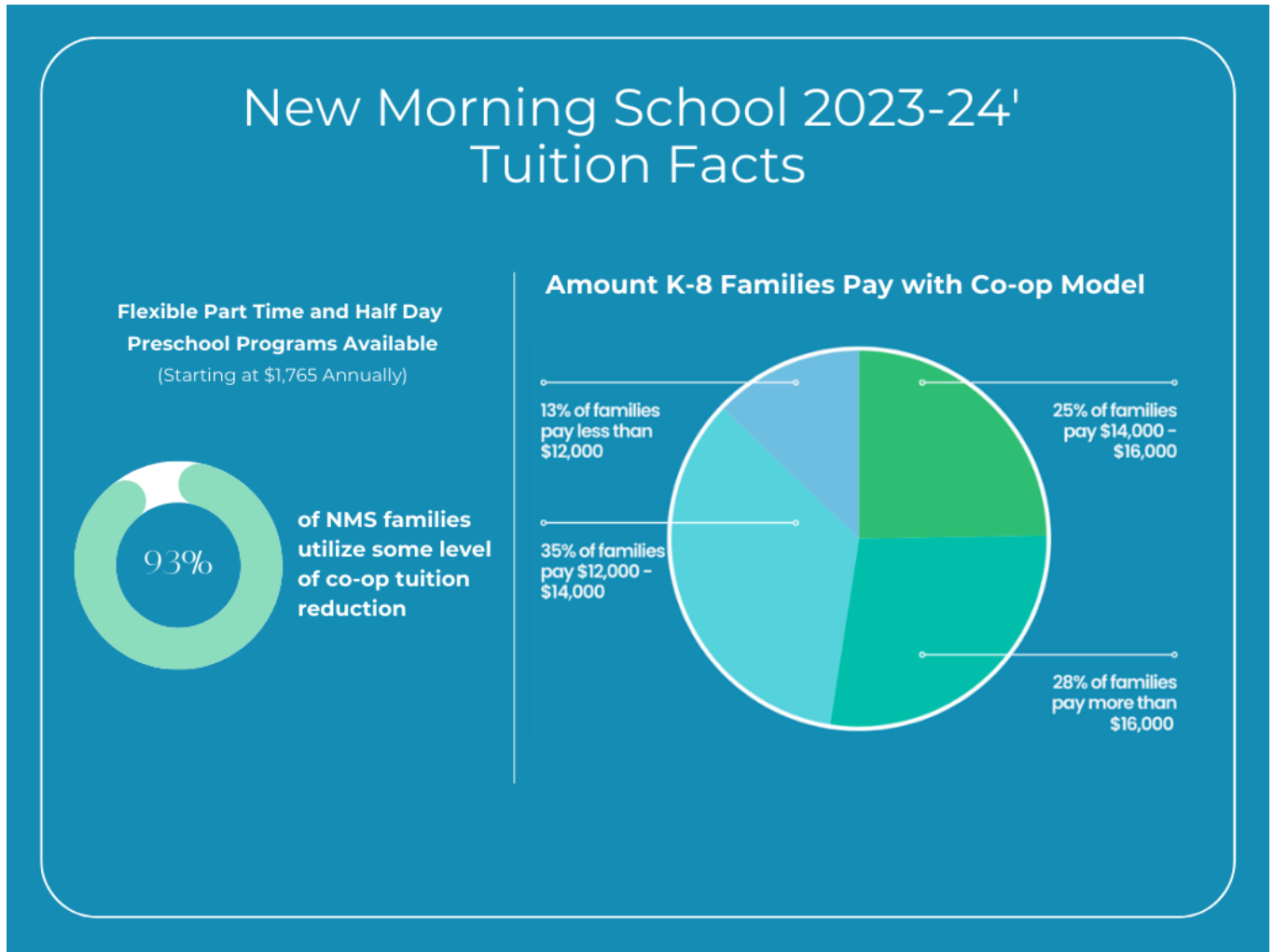
New Morning School is a privately funded school, meaning we are funded by student tuition, fundraising efforts, government and private grants, and private donors. As a Non-Profit organization, a **Board of Directors** shares in the governance of maintaining fiscal responsibility, sustainability, and strategic planning for our school.

We are committed to making New Morning School accessible and affordable for as many families as possible, which is one of the many reasons we use a co-op model for our student tuition.

The co-op model allows us to offer variable tuition reduction through optional co-op participation and job duties. Of course, we recognize that many families have hectic schedules and limited free time, so we make sure to offer a variety of opportunities for participation and co-op responsibilities. Examples of co-op jobs include serving as a classroom aid, weekend cleaning, serving on a committee, and special event support.

In addition, our flexible preschool program is offered as a full day, half day, or part-time program!

To learn more about our flexible tuition options, please schedule a tour.



2024-2025 Tuition Pricing

Financial Assistance Available

Pay in Full Discount (Upon Enrollment)

Monthly Payment Plan Offered: 11 Months beginning in May 2024

Payment by ACH or Credit Card only - fees apply

24-25 Tuition & Co-op Program Participation Levels				
Y5s to Grade 8				
Full Tuition		\$19,990		
Community Involvement		\$17,039		
Co-op Level 1		\$15,939		
Co-op Level 2		\$14,839		
Co-op Level 3		\$13,739		
Co-op Level 4		\$12,539		
Preschool AM only				
	2 days AM	3 days AM	4 days AM	5 days AM
Full Tuition	\$5,280	\$7,447	\$8,767	\$10,153
Community Involvement	\$4,125	\$6,127	\$7,519	\$8,910
Co-op Level 0.5	\$3,575	\$5,577	\$6,969	\$8,360
Co-op Level 1	\$3,025	\$5,027	\$6,419	\$7,810
Co-op Level 2	\$1,925	\$3,927	\$5,319	\$6,710
Preschool FULL DAYS				
	2 days FULL	3 days FULL	4 days FULL	5 days FULL
Full Tuition	\$8,525	\$12,606	\$15,257	\$17,776
Community Involvement	\$6,545	\$9,636	\$12,122	\$14,608
Co-op Level 0.5	\$5,995	\$9,086	\$11,572	\$14,058
Co-op Level 1	\$5,445	\$8,536	\$11,022	\$13,508
Co-op Level 2	\$4,345	\$7,436	\$9,922	\$12,408